

GREAT JOB!

In 2023, Burlington County Families Recycled

OVER 400 lbs. PER HOME!



2023 COUNTY RECYCLING REPORT FOR LUMBERTON
2,189,332
POUNDS OF PAPER, CARDBOARD, BOTTLES, AND CANS RECYCLED!
LANDFILL DISPOSAL FEE SAVINGS:
\$104,037

YOUR RECYCLING PROGRAM IS FUNDED BY THE BURLINGTON COUNTY BOARD OF COMMISSIONERS.



2024-2025 RECYCLING SCHEDULE | SET RECYCLING CURBSIDE BY 6 AM

AUGUST 2024							SEPTEMBER 2024							OCTOBER 2024							NOVEMBER 2024							DECEMBER 2024							JANUARY 2025						
S	M	T	W	TH	F	S	S	M	T	W	TH	F	S	S	M	T	W	TH	F	S	S	M	T	W	TH	F	S	S	M	T	W	TH	F	S	S	M	T	W	TH	F	S
					1	2	3	1	H	3	4	5	6	7	1	2	3	4	5	1	2	3	4	5	6	7	1	2	3	4	5	6	7	1	2	3	4	5	6	7	
4	5	6	7	8	9	10	8	9	10	11	12	13	14	6	7	8	9	10	11	12	3	4	5	6	7	8	9	8	9	10	11	12	13	14	5	6	7	8	9	10	11
11	12	13	14	15	16	17	15	16	17	18	19	20	21	13	14	15	16	17	18	19	10	11	12	13	14	15	16	15	16	17	18	19	20	21	12	13	14	15	16	17	18
18	19	20	21	22	23	24	22	23	24	25	26	27	28	20	21	22	23	24	25	26	17	18	19	20	21	22	23	22	23	24	H	26	27	28	19	20	21	22	23	24	25
25	26	27	28	29	30	31	29	30	27	28	29	30	31	24	25	26	27	H	29	30	29	30	31	29	30	31	26	27	28	29	30	31	26	27	28	29	30	31			

FEBRUARY 2025							MARCH 2025							APRIL 2025							MAY 2025							JUNE 2025							JULY 2025							
S	M	T	W	TH	F	S	S	M	T	W	TH	F	S	S	M	T	W	TH	F	S	S	M	T	W	TH	F	S	S	M	T	W	TH	F	S	S	M	T	W	TH	F	S	
						1	2	3	4	5	6	7	8	1	2	3	4	5	1	2	3	4	5	1	2	3	4	5	6	7	1	2	3	4	5	6	7	1	2	3	H	5
9	10	11	12	13	14	15	9	10	11	12	13	14	15	6	7	8	9	10	11	12	4	5	6	7	8	9	10	8	9	10	11	12	13	14	6	7	8	9	10	11	12	
16	17	18	19	20	21	22	16	17	18	19	20	21	22	13	14	15	16	17	18	19	11	12	13	14	15	16	17	15	16	17	18	19	20	21	13	14	15	16	17	18	19	
23	24	25	26	27	28	23	24	25	26	27	28	29	20	21	22	23	24	25	26	18	19	20	21	22	23	24	22	23	24	25	26	27	28	20	21	22	23	24	25	26		
							30	31	27	28	29	30	25	H	27	28	29	30	31	29	30	27	28	29	30	31	27	28	29	30	31											

THIS BROCHURE IS ONLY FOR RESIDENTS OF: **LUMBERTON**

HOLIDAY SCHEDULE WEEK OF:

Labor Day - Recycle Tues., Sept. 3, 2024

Memorial Day - Recycle Tues., May 27, 2025

NOTE: Recyclables **WILL** be collected on:

Columbus Day (10/14/24),

Veteran's Day (11/11/24), MLK Day (1/20/25),

and President's Day (2/17/25)

Lumberton Recycling Coordinator:

Tom Shover

Email tshover@lumbertontwp.com

www.lumbertontwp.com

QUESTIONS?

RECYCLING CARTS
(609) 267-3217 x101



CURBSIDE RECYCLING ISSUES

609-267-6889 Email: recycling@otcbc.org

GENERAL RECYCLING INFORMATION

609-499-1001

Email: recycle@co.burlington.nj.us

Online: burlcorecycles.com

COMPUTER/TV RECYCLING QUESTIONS

609-239-5909

Download the **FREE** Recycle Coach App!

RECYCLING DROPOFF SITE

Paper, Cardboard, Bottles & Cans:
34 Municipal Drive

Monday through Friday - 7am-11am
 1st & 3rd Saturday - 7:30am-1:30pm

Questions? 609-267-3217, DPW ext. 143

Household hazardous waste taken on the 1st & 3rd Saturday of each month from 7:30am-1:30pm (except 2nd & 3rd Saturdays in July)

Where to Recycle Computers & TVs:

Computers and TVs are banned from landfills in NJ. Do NOT set them curbside for trash collection.

Contact your municipality or visit burlcorecycles.com for recycling options.

Learn how to recycle hundreds of items! Download Burlington County's

RECYCLE COACH APP

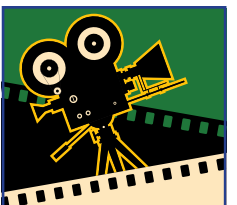


- View recycling calendar with paper shredding days
- Report missed pickups and cart issues
- Use the *What Goes Where* tool for info on handling TVs, batteries, hazardous waste, and more



No smartphone? No problem!

For a computer-friendly version, visit burlcorecycles.com.



ADD THIS MOVIE TO YOUR WATCH LIST!

Grab the popcorn and watch a fascinating film about how we sort your recycling.

Find our Single Stream Virtual Tour at **BURCO RECYCLES.COM**